

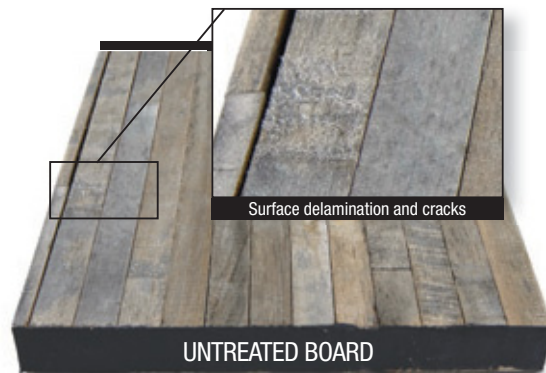
WAXIN

WATER OUT

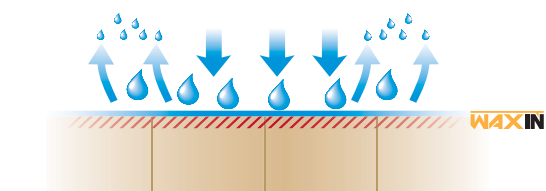
**THE PERFECT
UMBRELLA FOR
HARDWOOD
FLOORS**

PROLAM

Driven by Innovation



Prolam tested the effectiveness of WAXIN by exposing two wood panels to outdoor conditions for one full year. The photos above show one untreated panel and one protected by WAXIN.



With WAXIN, water evaporates before it can penetrate the wood.

PROLAM PROTECTS YOUR HARDWOOD FLOORS BETTER THAN EVER!

Prolam set the industry standard for quality and durability with its Zig-Zag technology and P-u-R solution for hardwood floors. Now, the industry leader is introducing another remarkable innovation—**WAXIN**.

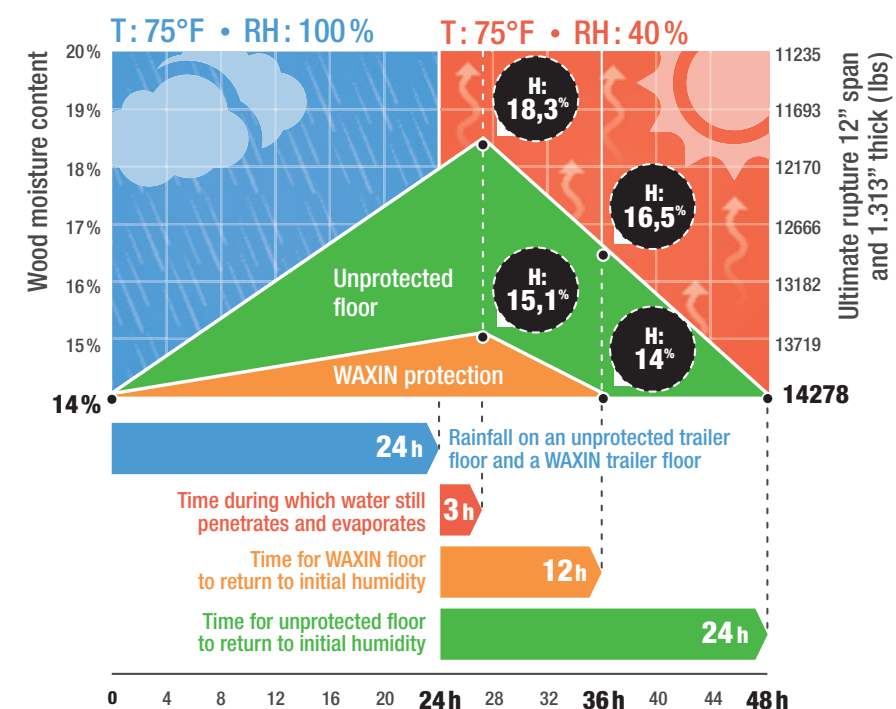
Due to temperature fluctuations, heat exposure from the sun, and moisture penetration caused by the rain, the top part of hardwood floors deteriorates over time. Constant variations among these factors leads to changes in the structure of the wood and speeds up its deterioration.

With **WAXIN** treatment, hardwood floors are protected against outside conditions.

INGENUITY

WAXIN protects hardwood floors and reduces weathering effects, thereby considerably slowing the wood's natural deterioration by limiting the impact of fluctuating moisture levels caused by outside conditions.

Prolam developed this cutting-edge technology that penetrates the surface of the hardwood with solid paraffin wax, creating a virtually waterproof barrier of protection. In this process, the hardwood is heated to expand its fibers, allowing the wax to penetrate the surface (0.060 to 0.120 inches deep). When the mix cools, the paraffin hardens and coats the wood fibers.



BENEFITS

WAXIN penetrates the wood and ensures it does not deteriorate. Conventional floor protection, such as varnish and polyurethane, are only top coats; they eventually break down due to forklift traffic and pallets being moved across the floor.

WAXIN remains solid and adheres to the wood fibers. Oil-based floor protection products are liquid and will progressively disperse over time, losing their effectiveness.

WAXIN is more durable than any other type of moisture protection for hardwood floors. Its effectiveness and water resistance continue even as the surface of the floor is worn.

WAXIN drastically reduces swelling in wood weight and volume due to weather conditions (by as much as 80%). With WAXIN, water evaporates before it can penetrate the wood.

WAXIN creates a virtually waterproof barrier of protection for hardwood floors, making domestic North American hardwood similar to tropical woods, such as apitong, a very tough wood that has a natural resistance to outside conditions. To prove it, a **WAXIN**-treated hardwood panel, an apitong flatbed floor panel, and an untreated hardwood floor panel were submerged in water for 17 hours. The result? The **WAXIN**-treated panel was nearly as water-resistant as the apitong panel and at least three times more than the untreated panel.

OPTIONAL TREATMENT AREA

WAXIN is generally applied to the area of the floor that is most exposed and vulnerable to inclement weather. You can opt for the first 8 ft. or the entire top of trailer floor.



WAXIN-TREATED FLOORS REPEL WATER EVEN AS THE FLOOR SURFACE THINS, AS SHOWN:



0.020 INCH PLANED



0.040 INCH PLANED



0.060 INCH PLANED

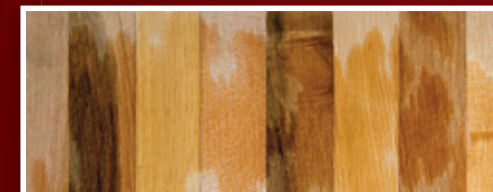


WATER RESISTANCE

WAXIN not only makes wood highly water-resistant, its long-lasting protection preserves the wood's effectiveness, even as the floor surface thins due to normal wear.

The photos above show a **WAXIN**-treated panel, with each subsequent image showing the same panel with increasingly thicker strips of its surface planed off. Even when the thickness of the **WAXIN**-treated surface is reduced, **WAXIN** continues to protect the wood against water penetration; water still beads on the wood.

UNTREATED BOARD

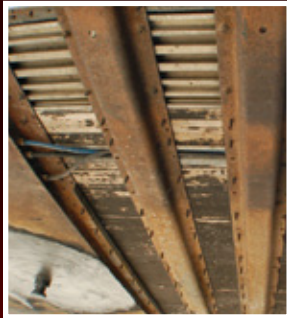


All photos taken 10 minutes after water exposure.

YOUR HARDWOOD TRAILER FLOOR MUST BE MOISTURE-RESISTANT.

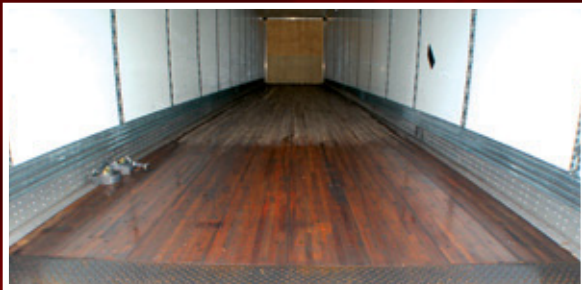
THE REASON? When your trailer floor is soaking wet, with moisture content levels of over 23%, it has already lost over 35% of its strength and hardness, and over 25% of its rigidity. Prolam offers three innovative technologies that help to keep moisture content levels under 18%—the ideal level for durable trailer floors.

Protection from damaging moisture has never been this easy!



P•u•R

Never-before-seen protection for wood trailer floors. PuR's hot-melt polyurethane reactive undercoating is used on the underside of laminated trailer floors to eliminate degradation issues associated with traditional water-based paint.



WAXIN

WAXIN creates a virtually waterproof barrier of protection for hardwood floors, penetrating the surface up to 0.125 inches deep. **WAXIN** penetrates the wood fiber, ensuring optimum water resistance, even as the surface of the floor is worn. **WAXIN** will stay in place even with forklifts and pallets repeatedly being moved across the floor.



Zig Zag

Your trailer floors are stronger, more solid, and have a greater fatigue resistance. **Zig-Zag** prevents water from penetrating your floors: with over 90% of **Zig-Zag** joints sealed tightly during assembly, your trailer floors are significantly more protected against water than traditional joints.



SUSTAINABLE FORESTRY INITIATIVE

100% SFI-certified floors available **only from Prolam.**

PRINTED IN CANADA 0514

For more information, visit:
www.prolamfloors.com or call **800.883.3975**

PROLAM
Driven by Innovation